

N.W. 1/4 OF N.W. 1/4
SECTION 24, T.5N., R.2W., S.L.B. & M.

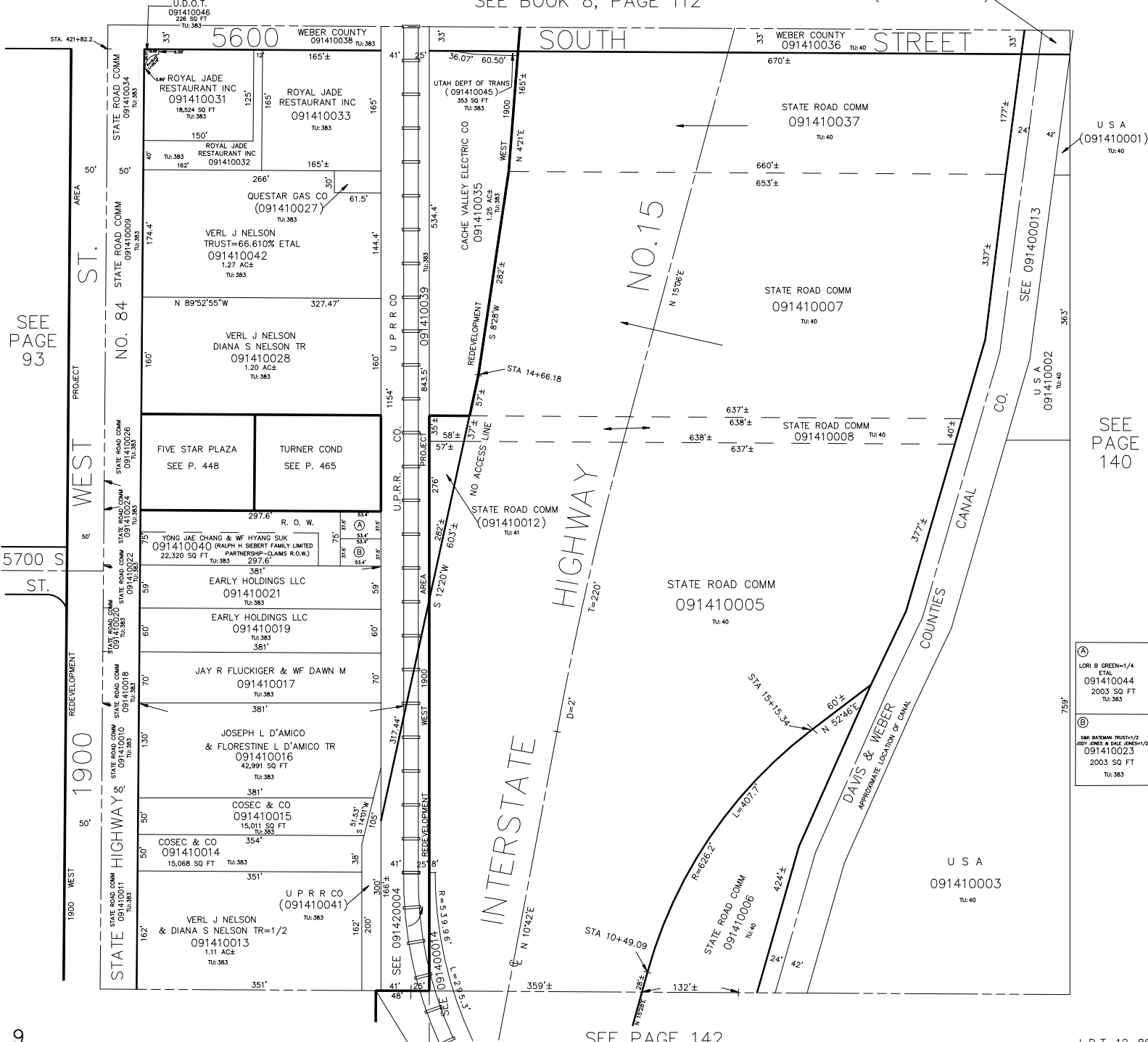
TAXING UNIT: 40, 41, 383

IN ROY CITY
SCALE 1" = 100'

NORTH DAVIS COUNTY SEWER DISTRICT
ROY WATER CONSERVANCY SUBDISTRICT
BOUNDARY FOLLOWS THE WESTERLY "NO ACCESS"
LINE OF THE INTERSTATE HIGHWAY NO. 15.

SEE BOOK 8, PAGE 112

(SEE 081130037)



SEE PAGE 93

SEE PAGE 140

(A) LORI B GREEN=1/4 ETAL 091410044 2003 SQ FT TU:383
(B) SAK BATEMAN TRUST=1/2 JOEY JONES & DALE JONES=1/2 091410023 2003 SQ FT TU:383